

Burr Oak State Park

10220 Burr Oak Lodge Road
Glouster, Ohio 45732

(740) 767-3570 - Park Office

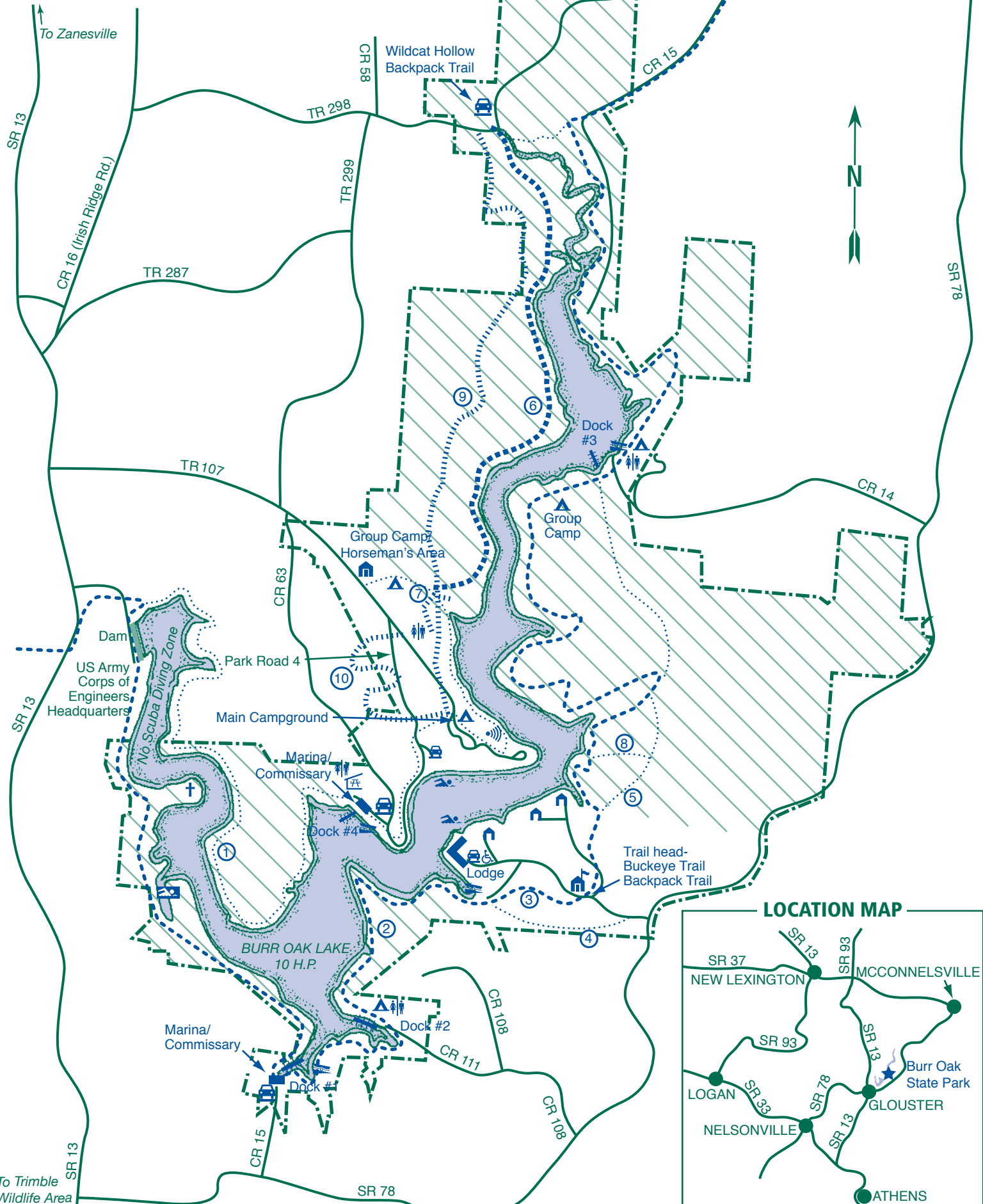
E-mail: burr.oak.parks@dnr.state.oh.us

Burr Oak Resort Lodge

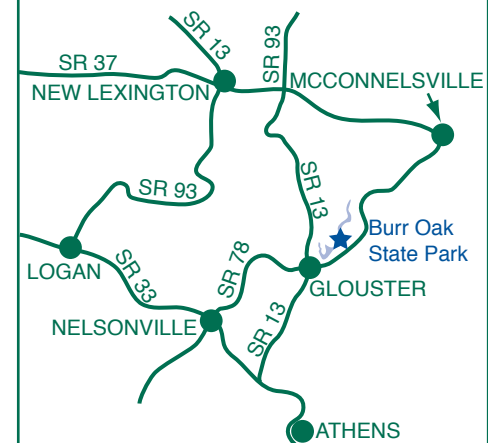
10660 Burr Oak Lodge Road
Glouster, Ohio 45732

(740) 767-2112

800-282-7275 - Reservations



LOCATION MAP



TRAILS

- ① Lakeview (3.5 miles, Yellow)
- ② Ravine (1.5 miles, Blue)
- ③ Chipmunk (0.5 miles, Blue)
- ④ Red Fox (0.7 miles, Red)
- ⑤ Buckeye Loop (3 miles, White)
- ⑥ Backpack/Bridle (7 miles, Yellow)
- ⑦ Campground (1 mile, White)
- ⑧ Tanager (0.5 miles, Red)
- ⑨ Red 7.5 miles
- ⑩ Blue 3.9 miles

- Backpack/Bridle
- Buckeye (Blue)
- Hiking
- Bridle

HUNTING

- State Park Hunting Area (see hunting map for details)

LEGEND

- Park Office
- Picnic Shelter
- Latrine
- Boat Dock
- Launch Ramp
- Park Boundary
- Parking
- Cottages
- Camp Area
- Camp Check-in Station
- Amphitheater
- Pioneer Burial Site
- Boat Swim Area
- Wheelchair Accessible
- Public Beach